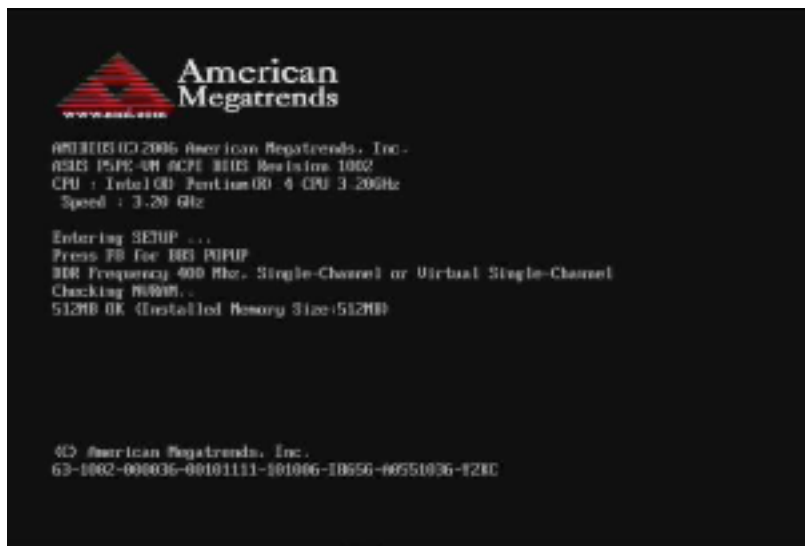


## Enabling On-Board Audio on your Creation Station

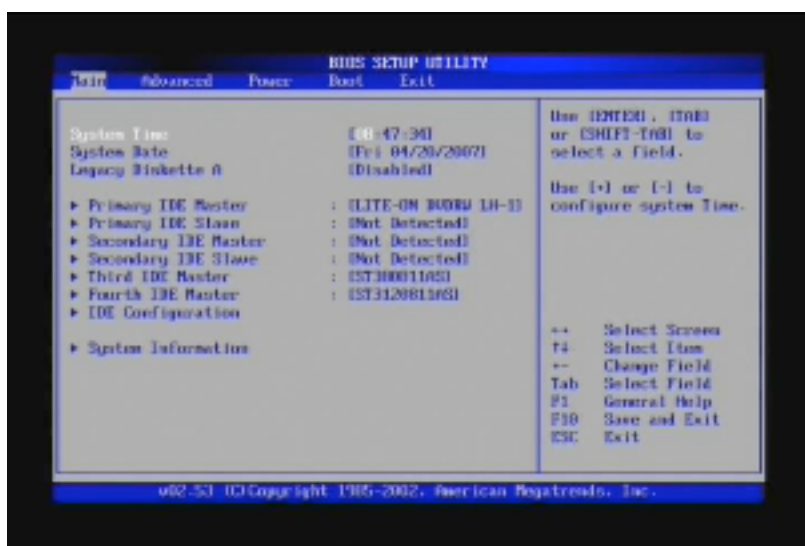
### Instructions for CSTowerLE and CSTower

Also applies to CSTowerPlus

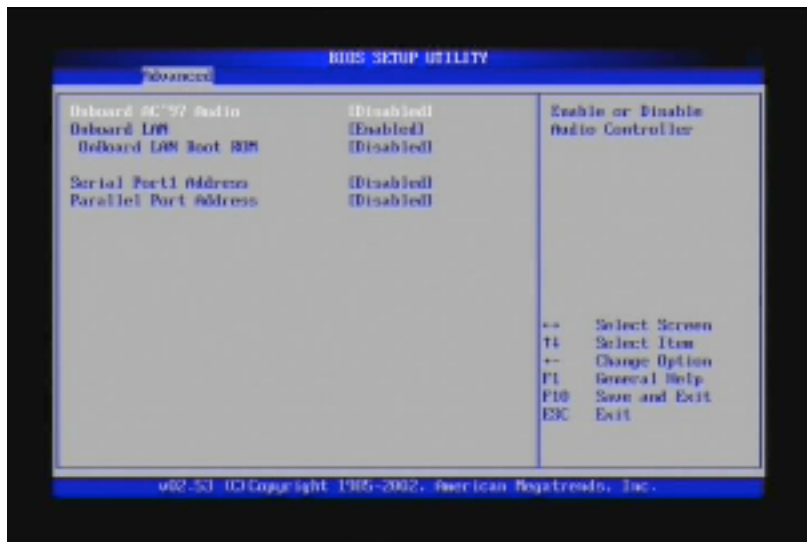
1. Reboot or Power on the computer.
2. When the first text screen appears, repeatedly tap the Delete key to run the BIOS Setup Utility.



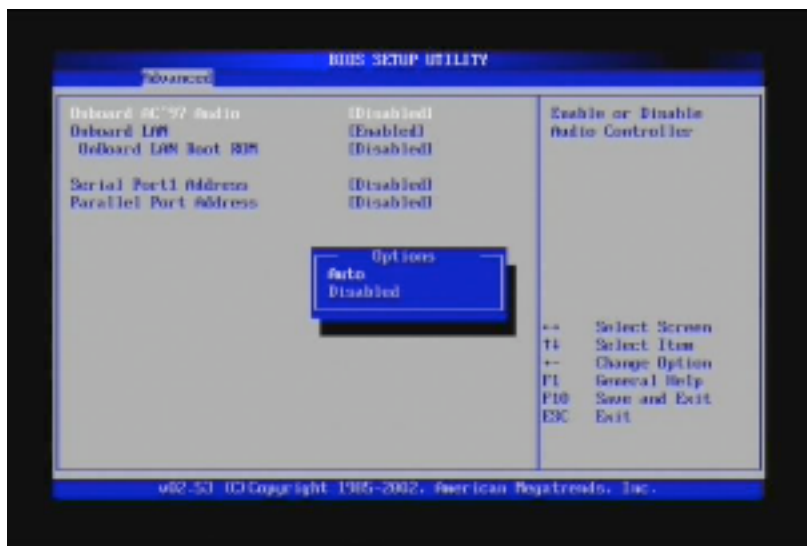
3. You will enter the BIOS Setup utility. It will have a blue and gray background.

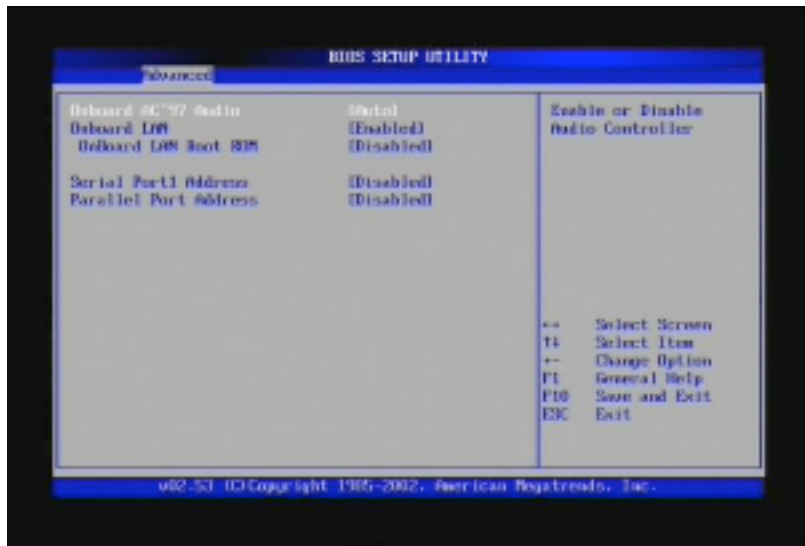


4. Using the 4 arrow keys on your keyboard, navigate to the Advanced tab and select "Onboard Devices Configuration." Press Enter.



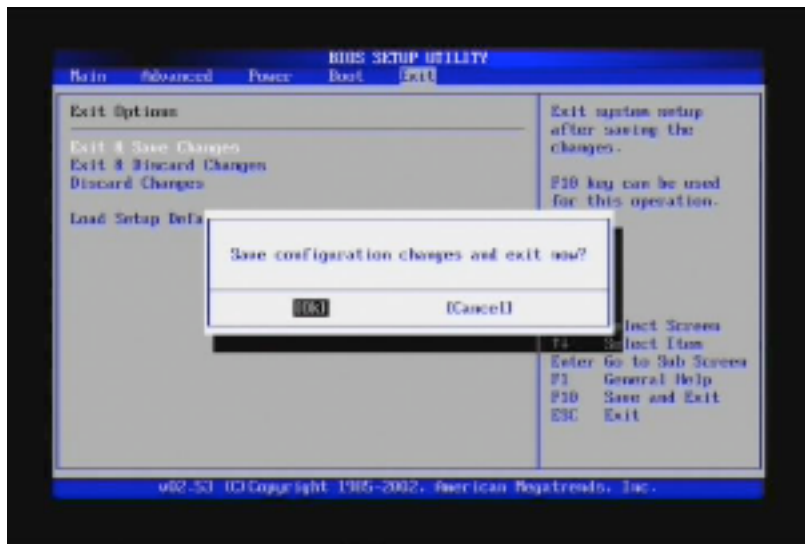
5. Highlight the top choice, "Onboard AC'97 Audio." It will be set to "Disabled." Press Enter on it, and then highlight and choose "Auto."





6. Press Escape (Esc) once to return to the main menu.

7. Cursor over to Exit and press Enter. The screen will read:



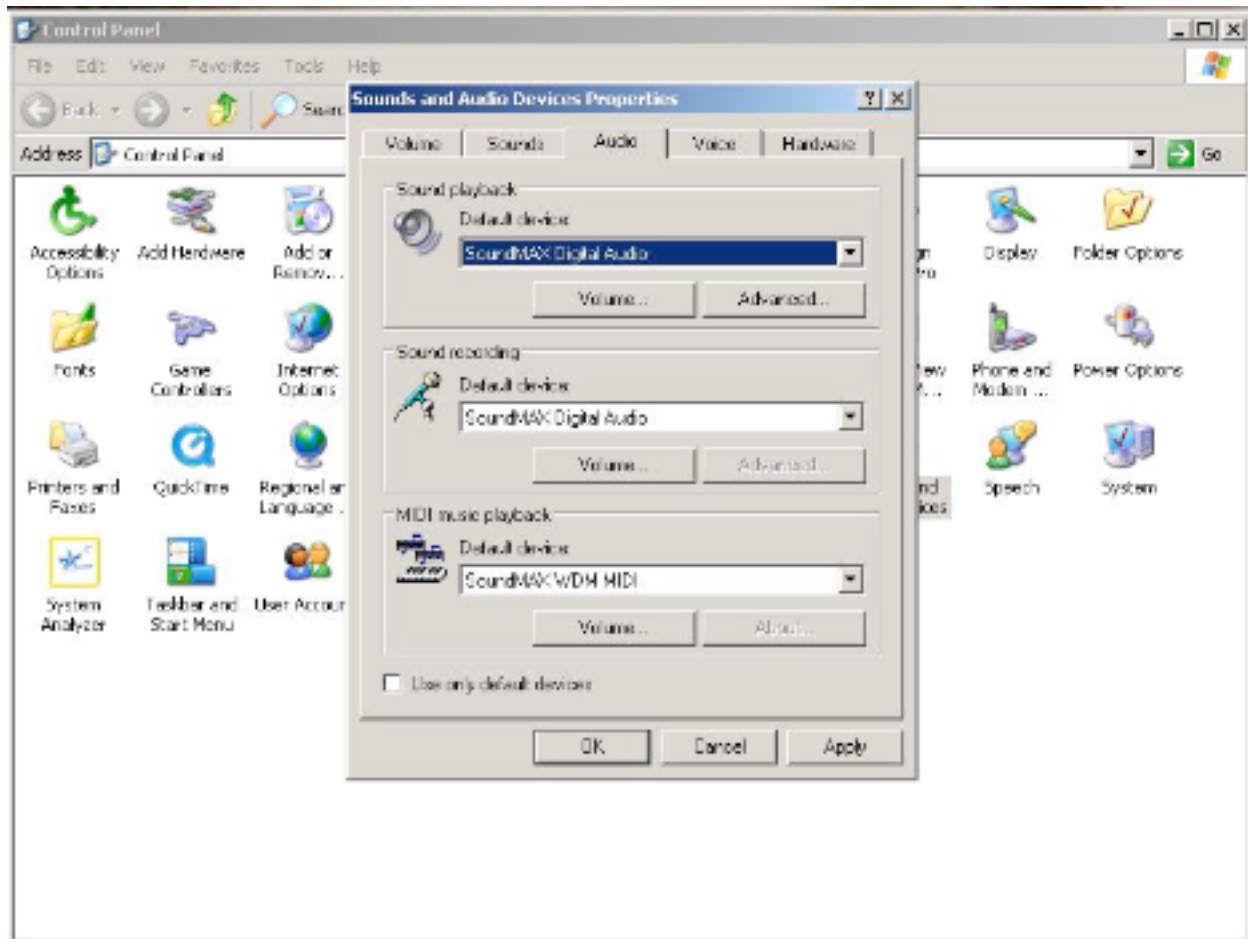
8. Press Enter again (make sure OK is highlighted).

9. Your computer will now reboot. You may see a Found New Hardware Wizard for "HD Audio Bus." If this comes up, then install the software automatically. Do not select the option to allow Windows Update to search for the software.

10. Go to My Computer > C: > Built in Audio and run the Setup.exe file. Follow the on-screen instructions.

11. After rebooting, go to Start > Control panel > Sounds and Audio Devices > Audio,

and verify that the drivers have been installed correctly. You should see “SoundMAX Digital Audio” available as an option for your Default Playback Device.



You will now be able to use your built-in audio card on your Creation Station.