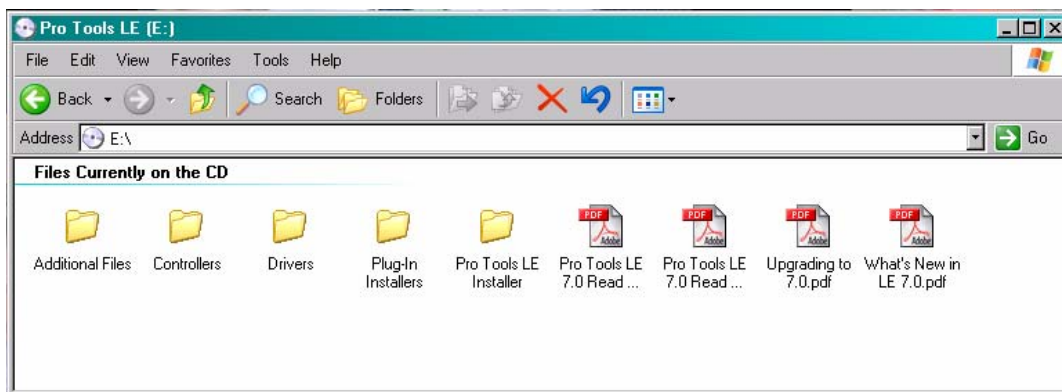


Installing Pro Tools LE 7 on Windows XP

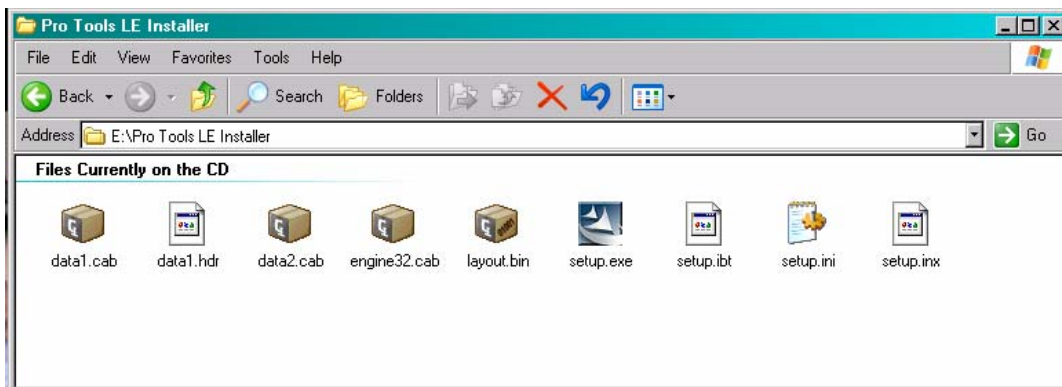
NOTICE: This tutorial is designed to help you install Pro Tools LE 7 on your PC running Windows XP. Pro Tools is only qualified for XP Home and Professional Editions; Media Center, Tablet, and Pro x64 Editions will NOT work. Make sure you have a qualified edition before proceeding. Also, please see www.digidesign.com/compato/ for a list of compatibility issues, including known incompatibilities and recommended systems. After verifying your system, you may wish to print this document for easy reference.

Preparing to Install

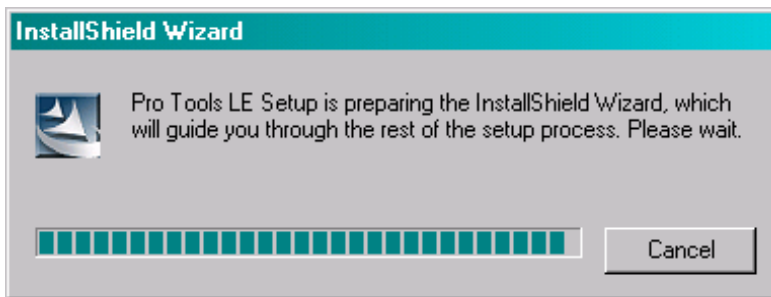
1. Before proceeding, please close any applications that may be running. Also make sure that your Digidesign hardware is connected and turned on
2. Insert your CD. If AutoRun is enabled, you will immediately see the following window. If not, please double-click on your CD drive to view the files.



3. Double-click on the folder labeled "Pro Tools LE Installer." You will see the following icons:

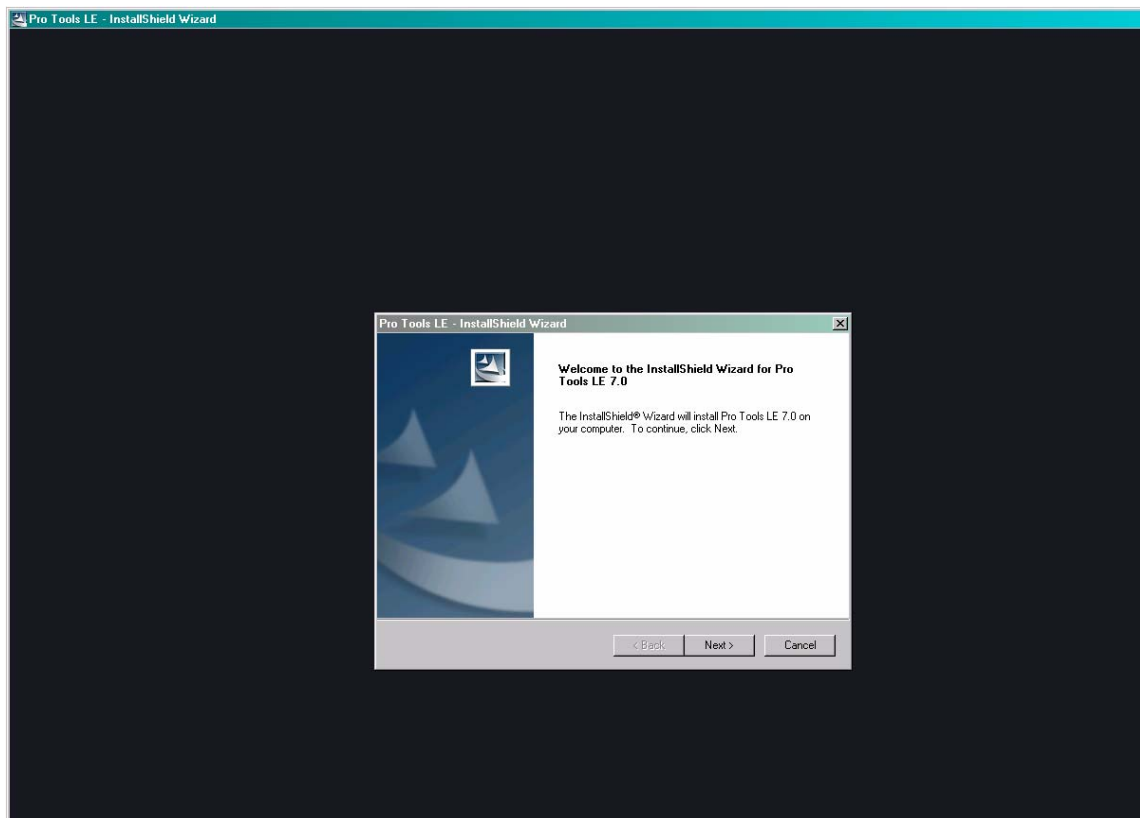


4. Double-click on the file labeled “setup.exe.” The Pro Tools Installation Wizard will begin.

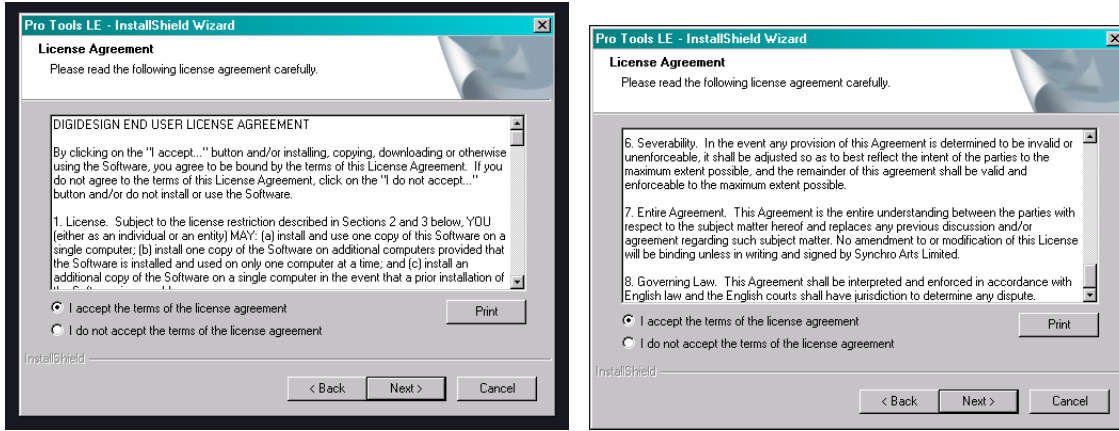


The Installation Wizard

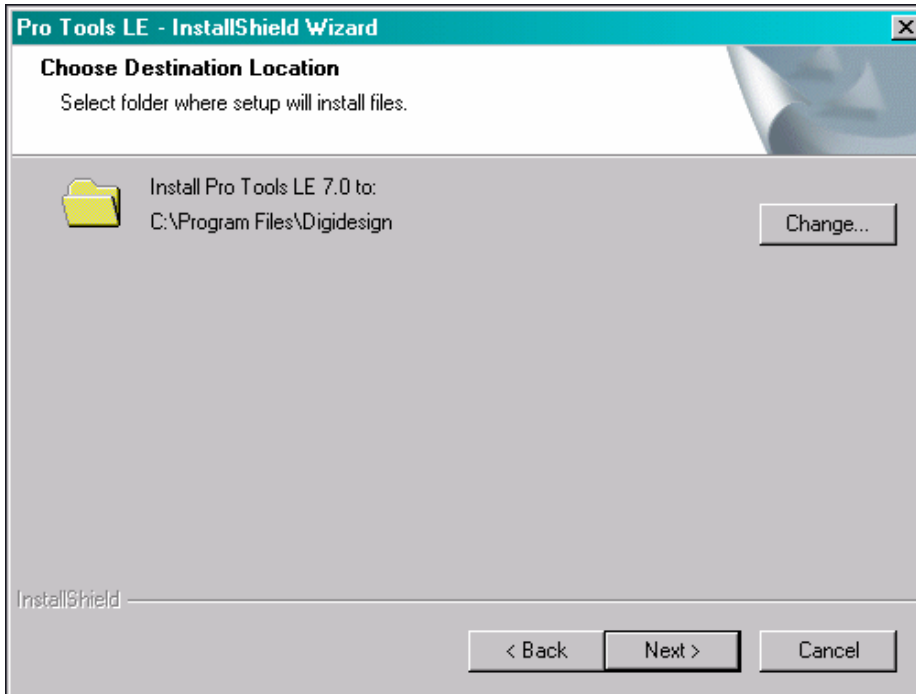
1. After the Installation Wizard loads, you will see the following screen. Press Next to continue.



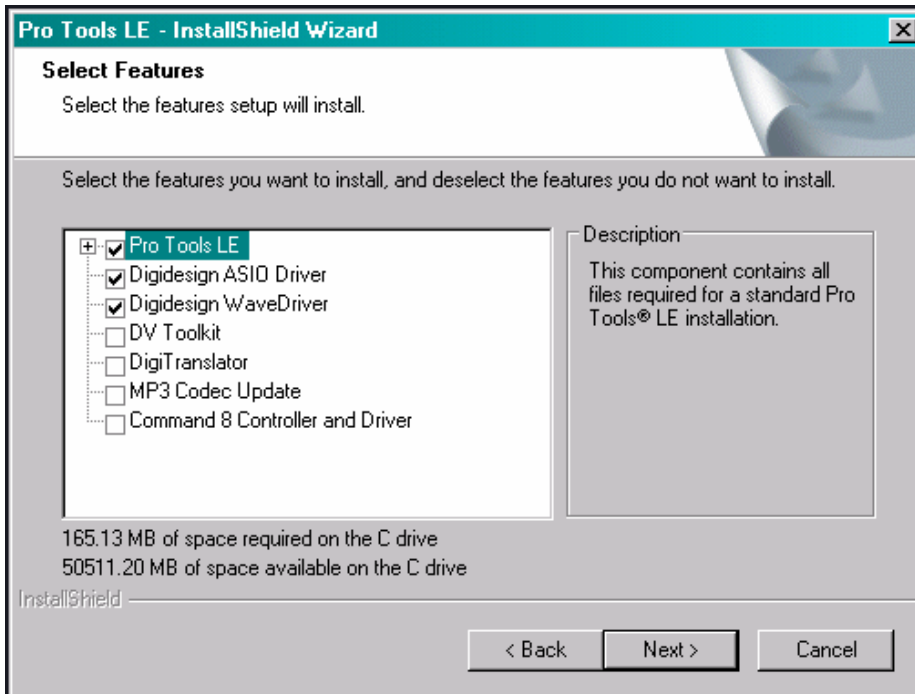
2. You will then see two license agreements. Please read these and decide whether to accept or decline the terms. If you accept them, press Next on both agreements to continue.



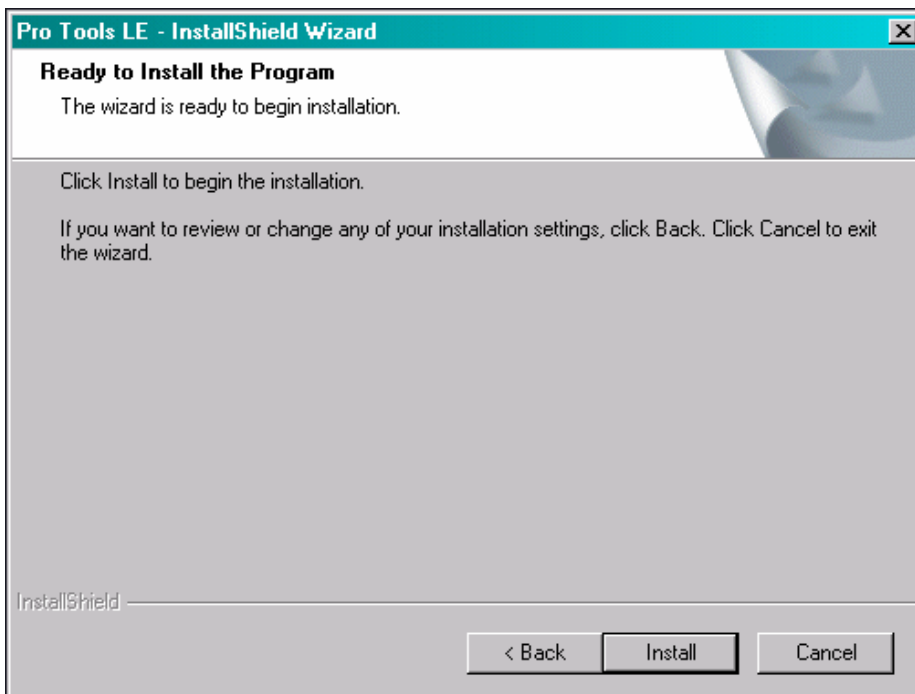
3. You will now be prompted to choose a destination folder. Unless you have a VERY specific reason to change the location, leave it on C:\Program Files\Digidesign and press Next.



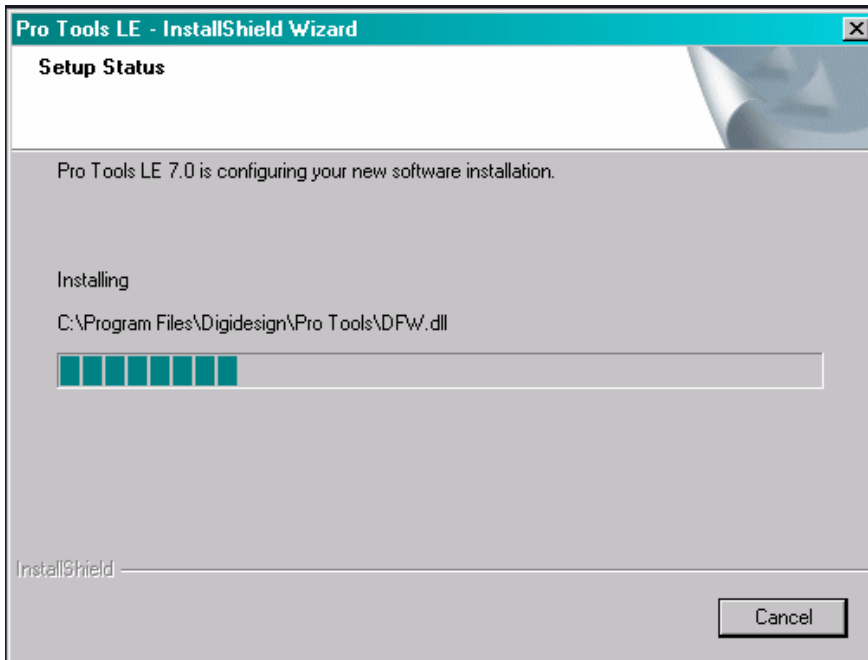
4. Select the components you wish to have installed. Leave the top three choices (Pro Tools LE and both Digidesign Drivers) selected. Unless you have purchased any of the other components (all are sold separately), leave them unchecked.



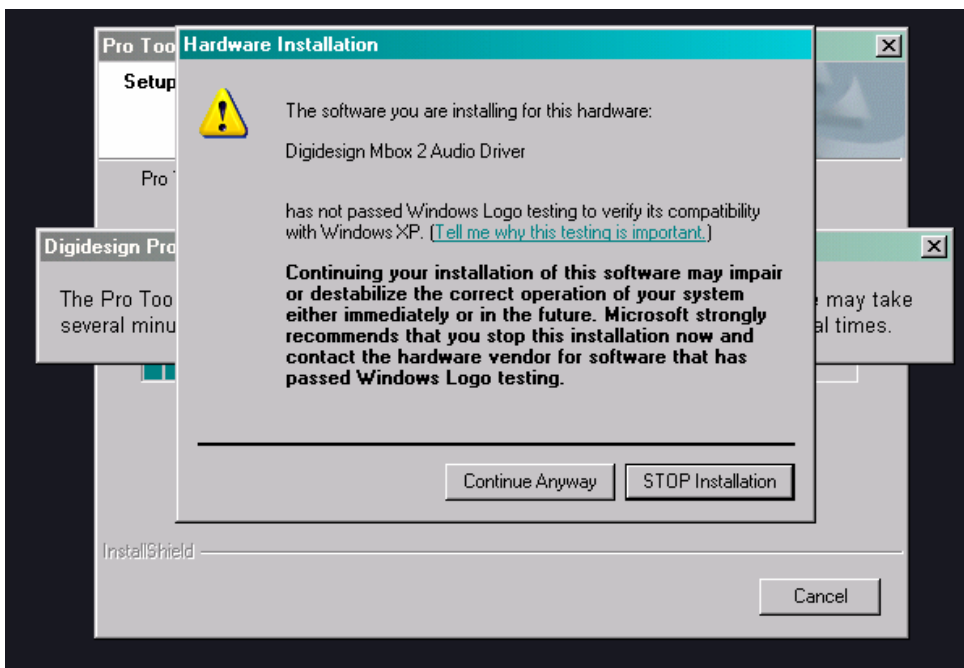
5. Press Install to begin the installation.



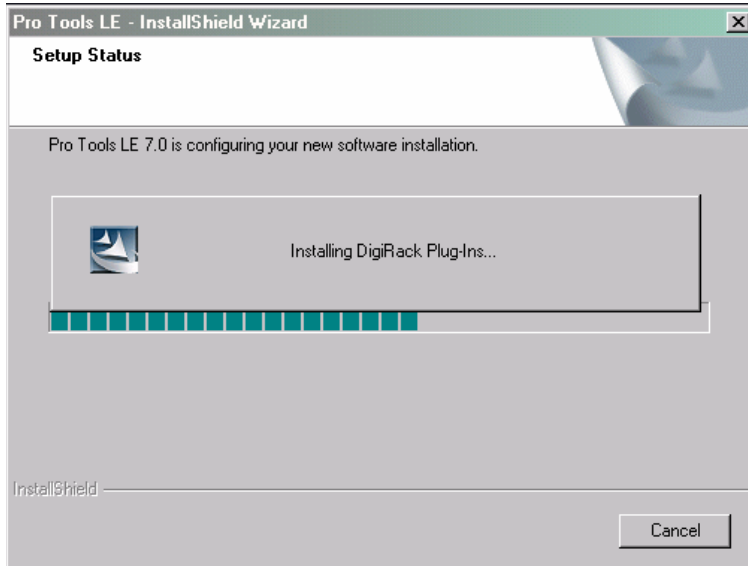
6. You will see several files flash by very quickly as the progress bar fills up. Do not press anything while this is happening.



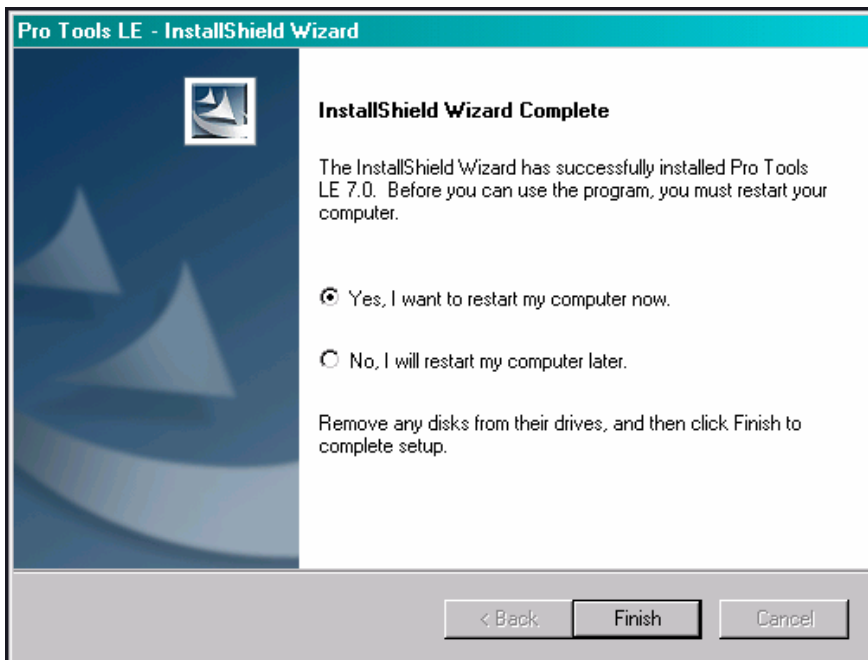
7. As the program files are being installed, you will be notified by Microsoft that the Digidesign drivers have not passed Windows Logo Testing. The message may appear several times, with a different device being “tested” each time. Do not worry about this; it will not affect the way Pro Tools OR your hardware operates. Choose Continue Anyway every time the message appears.



8. After Logo Testing, the Wizard will continue to install other components of your Pro Tools system, such as the DigiRack and Bomb Factory Plug-Ins. Windows will then configure your installation. As before, do not do anything while this is happening.



9. Once the Wizard is complete, Pro Tools will be installed. You still must reboot the computer for the changes in Windows to take effect. Choose “Yes, I want to...” and press the Finish button. Windows will automatically reboot.

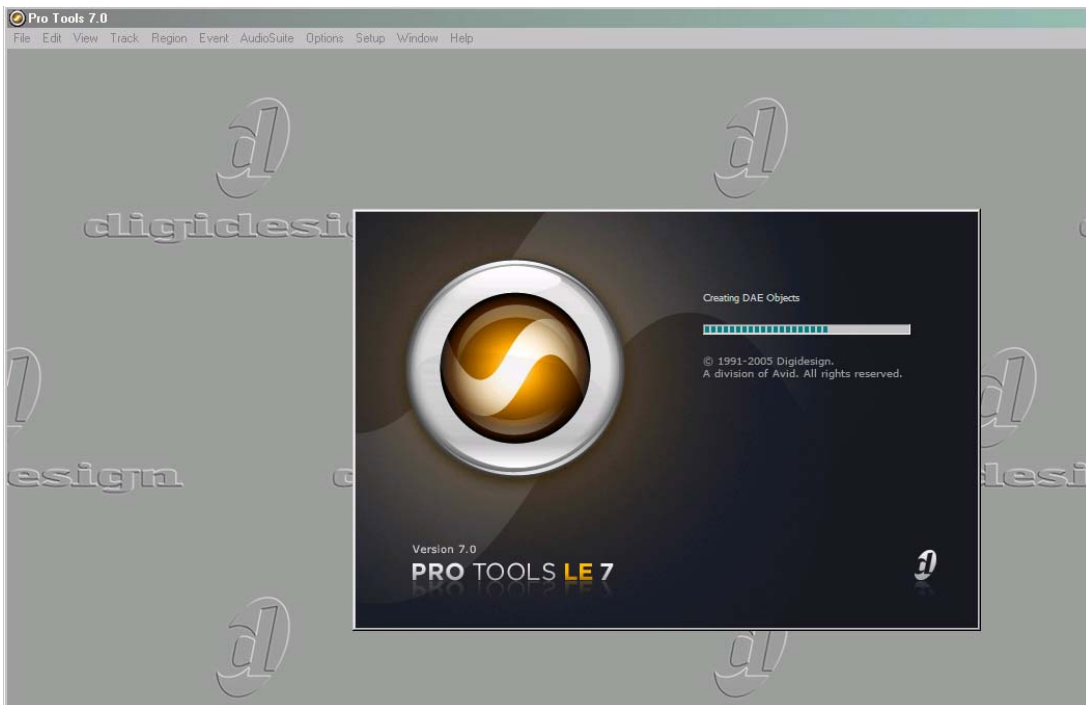


Verifying the Installation

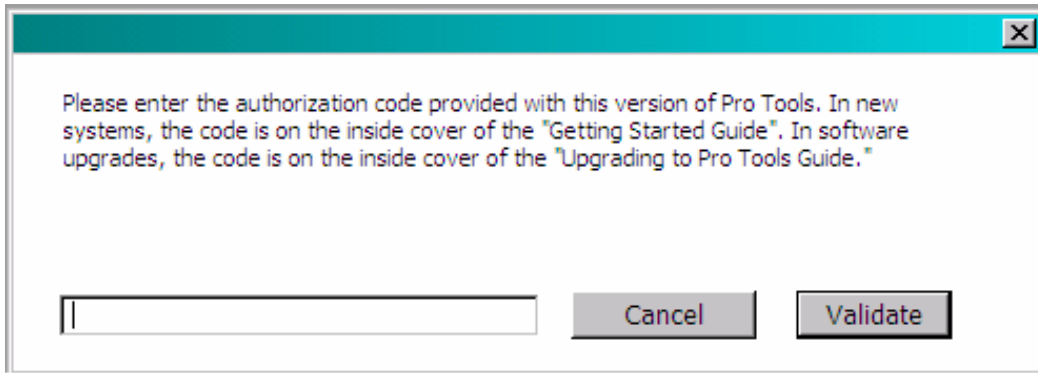
1. When Windows reboots, you will see a shortcut created on your Desktop. Double-click on it to launch Pro Tools.



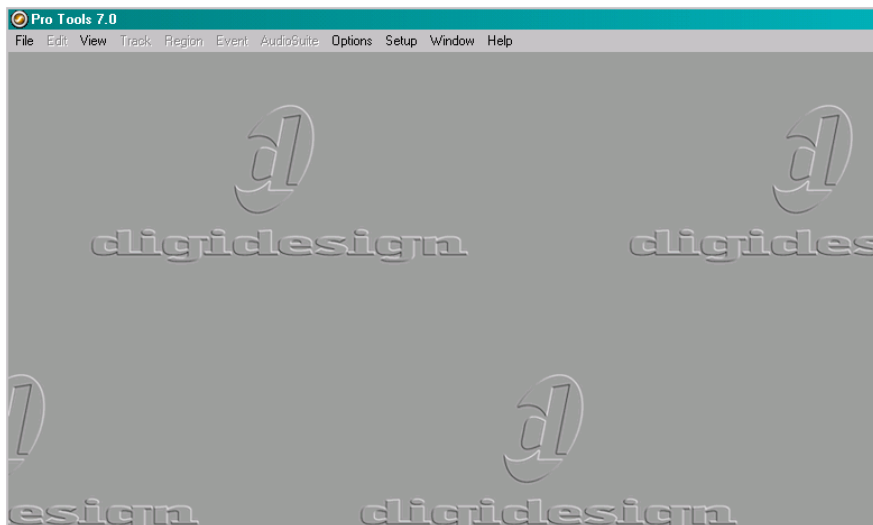
2. After double-clicking, there may be several seconds where nothing happens. You will not need to launch Pro Tools again. Wait for the splash screen to show up:



3. After Pro Tools launches for the first time, you will be prompted to enter your authorization code. It will be one of the guides listed in the message, and begin with DIG10700. Make sure you pay attention to capitalization and spaces, and remember that 0 is a zero, not the letter O.



4. After entering your code, press the Validate button. If you entered it correctly, the window will disappear and you will see a gray background with nothing in it. Do not be alarmed; this is normal.



Ready to Rock

At this point, you are ready to make music! You can create a session and begin recording immediately. Consult the Getting Started Guide or the additional training resources included with your Sweetwater purchase for further help. If you get any error messages along the way, please contact Sweetwater Technical Support.

Enjoy Pro Tools!